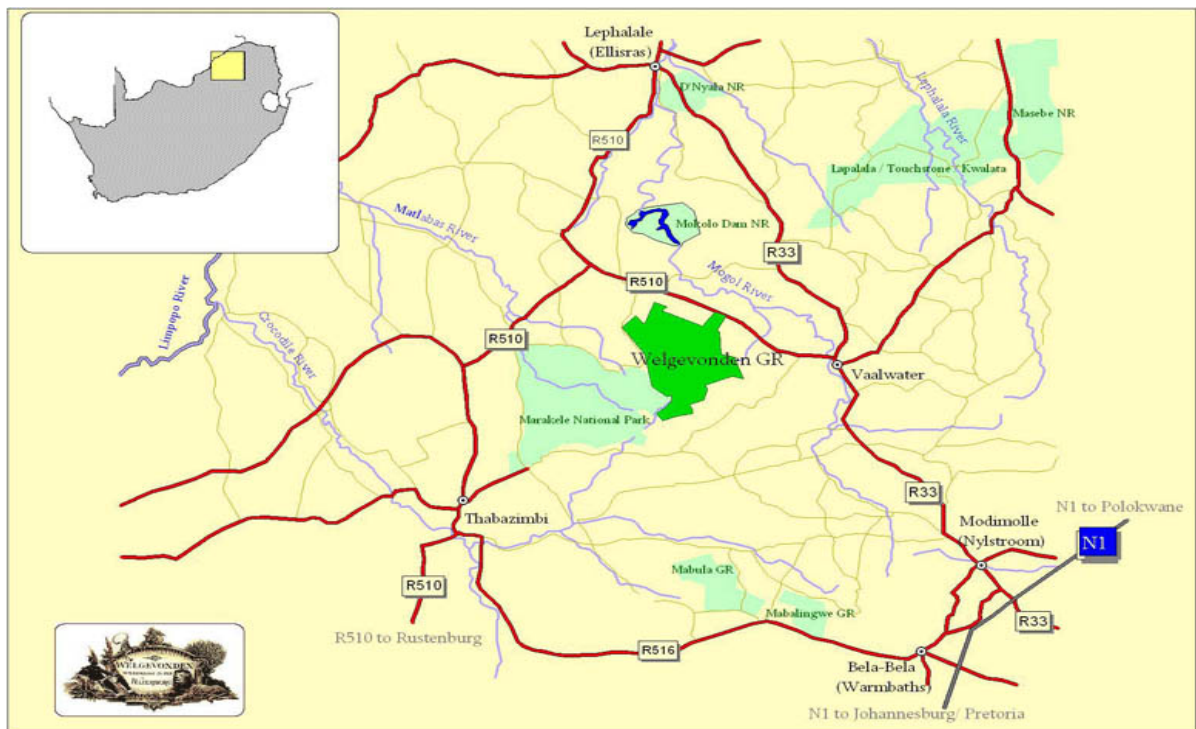




Inzalo Safari Lodge Map and Directions

Contact details:

Dave: +27 82 494 6029
Henriette: +27 82 886 8114
Lodge VOIP: +27 12 000 4207



To East Gate

- From Johannesburg drive to Pretoria and follow the N1 highway towards Polokwane
- Keep on the N1 for about 170km
- At the Kranskop Toll Plaza take the far left slipway off the highway to Modimolle (old Nylstroom)
- Drive 10km to Modimolle and continue on through the town to the R33
- Drive 63km to Vaalwater and continue on through the town staying on the R517
- 14.2km from Vaalwater keep a lookout for the Welgevonden East Gate Sign on the left (Turn to East Gate GPS: S24 15.723 E27 59.139)
- Turn onto the dirt road and continue for 11km to the gate and guard house (East Gate GPS: S24 17.825 E27 55.291)
- The guards will direct you to the secure parking area where we will meet you and drive you to the lodge in our game-viewing vehicle