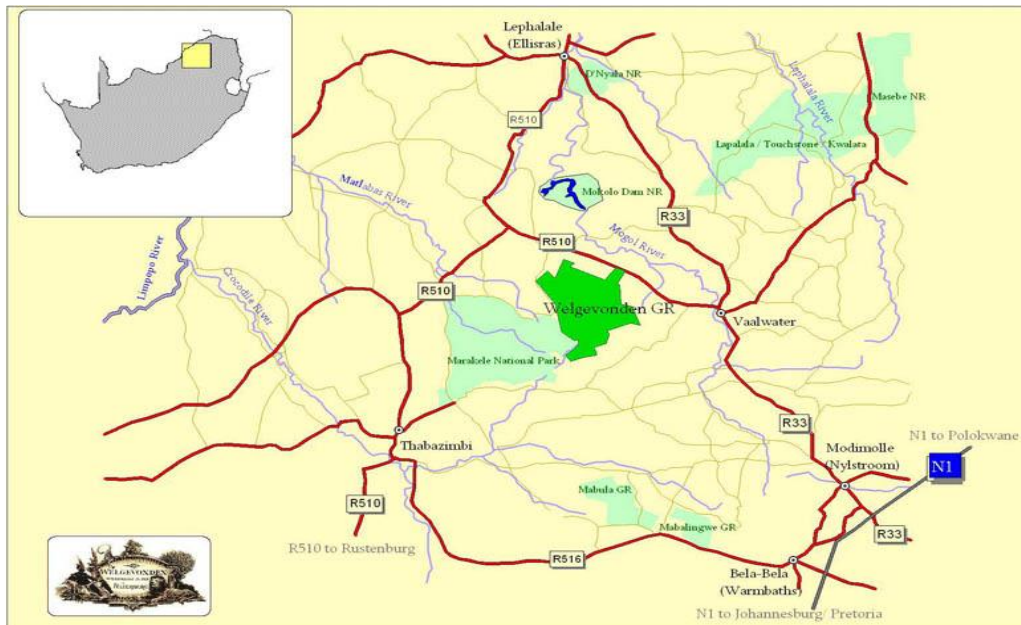


Inzalo Safari Lodge Map and Directions



Contact details:

Lodge VOIP: +27 014 161 0933



Directions to Welgevonden East Gate

Please follow the directions below to ensure that you do not miss the East Gate turnoff from the main road:

- From Johannesburg drive to Pretoria and follow the N1 highway towards Polokwane
- Keep on the N1 for about 170km
- At the Kranskop Toll Plaza take the far-left slipway off the highway to Modimolle (old Nylstroom)
- Drive 10km to Modimolle and continue through the town to the R33
- Drive 63km and travel to the small town of Vaalwater – do not turn-off anywhere (you will see the SPAR and Total garage on the left)
- 6km out of Vaalwater you will pass the “Bakerspas” turn off
- Just after the “Bakerspas” road keep a look out for a wood lattice game fence that starts (on the left)
- About 6 km after “Bakerspas” road, **the wood lattice fence ends**, turn to your left on the small dirt road. This is the road to Welgevonden East Gate.
- You will see a red no poaching sign on the right with a small green sign indicating Welgevonden East Gate
- After 8 km you will arrive at Welgevonden East Gate. Please sign in as guest to Inzalo Safari Lodge, Site 36.
- The guards will direct you to the secure parking area where we will meet you and drive you to the lodge in our game-viewing vehicle.